



VASE: Stream seismograms to your computer

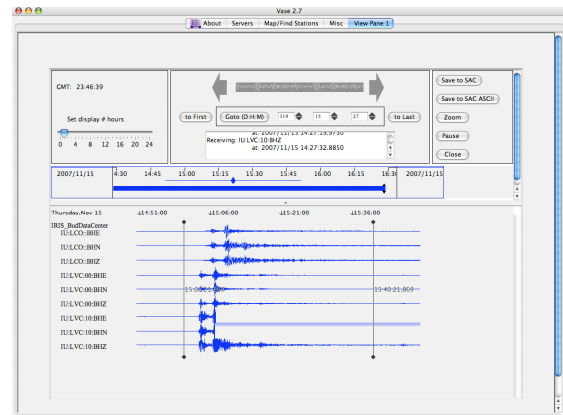


Developed at the IRIS DMC, VASE is the quickest and easiest way to stream seismograms from many places in the world to your computer. In addition to streaming seismograms in near real-time, VASE can also access almost all of the archived data at IRIS.

Using a map you can specify regions of the world and download seismograms from stations in these regions. You can specify regions of the world by drawing a latitude and longitude bounding box, specify points and distances or just draw an arbitrary shape. Making a request will plot seismograms from stations in these regions.

VASE can save the data to your computer in either the SAC, SAC ASCII or miniSEED formats.

<http://www.iris.edu/vase/>



JWEED: A powerful, easy-to-use data request tool



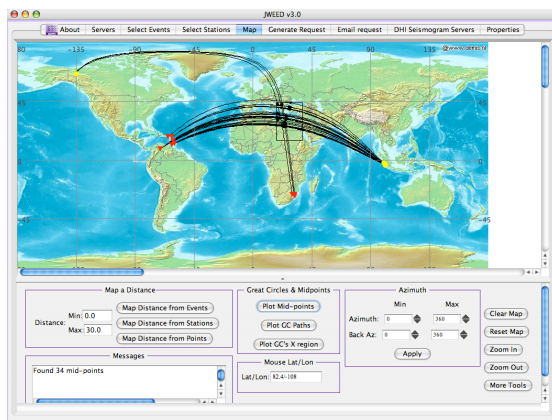
Developed at the IRIS DMC, JWEED combines an easy to use graphical user interface with an extensive array of software features designed to aid the user in retrieving seismograms from recent and past earthquakes.

Find and plot stations and events using the mapping tools. Included are support for azimuth and back azimuth, distance, mid-point and great circle calculations.

Once you have selected the events and stations of interest, you can then retrieve seismograms based on user specified phase arrival times.

One can either email a request file to the IRIS DMC or the NetDC system and obtain a SEED volume or obtain seismograms directly to your computer, plotting and/or saving locally as SAC or miniSEED files.

<http://www.iris.edu/jweed/>



IRIS Data Management Center
1408 NE 45th St. Suite 201
Seattle, WA 98105
Phone: 206.547.0393 | Fax: 206.547.1093
Last Update: 11/06/09

